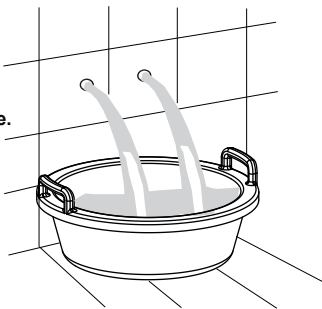




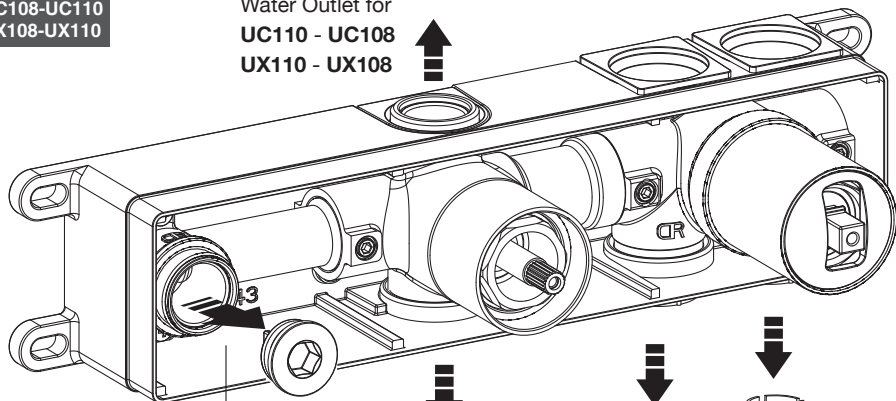
I  
UK  
F  
D  
E  
CZ  
SK

- L'installazione deve essere eseguita da personale qualificato!
- Spurgare le tubazioni prima di collegare il rubinetto all'impianto.
- Installation performed by qualified personnel!
- Before connecting to mains, bleed the pipes to avoid damage.
- L'installation effectuée par un personnel qualifié!
- Avant de brancher le robinet au réseau hydraulique, purger la tuyauterie.
- Installation von qualifiziertem Personal!
- Entleeren Sie die Leitungen bevor Sie die Armaturen an die Wasserversorgung anschliessen.
- Instalación realizada por personal calificado!
- Antes de conectar el grifo a la red hidráulica purgar las tuberías.
- Instalace musí být provedena kvalifikovaným personálem!
- Inštalácia musí byť vykonaná kvalifikovaným personálom!

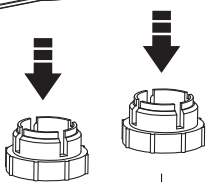


UC108-UC110  
UX108-UX110

Water Outlet for  
UC110 - UC108  
UX110 - UX108



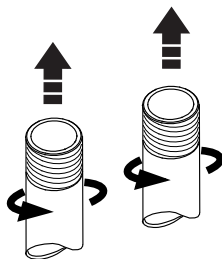
Water Outlet for  
UC110 - UX110



Entrata acqua Fredda  
Cold water inlet  
Entrée eau froid  
Eingang Kaltwasser  
Introducción de agua frío

Uscita acqua miscelata  
Mixed Water Outlet  
Sortie eau mélangée  
Ausgang des gemischten Wassers  
Mezcla de salida de agua

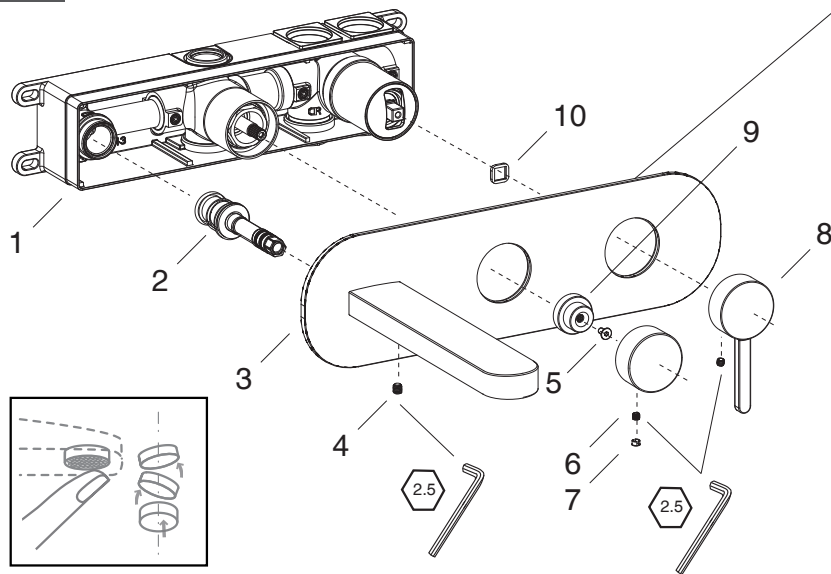
Entrata acqua Calda  
Hot water inlet  
Entrée eau Chaude  
Eingang Warmwasser  
Introducción de agua caliente



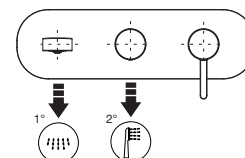
TEFLON

Montaggio e Pezzi di Ricambio - Installation And Spare Parts - Montage et pièces détachées  
Montage und Ersatzteile - Montaje y piezas de recambio

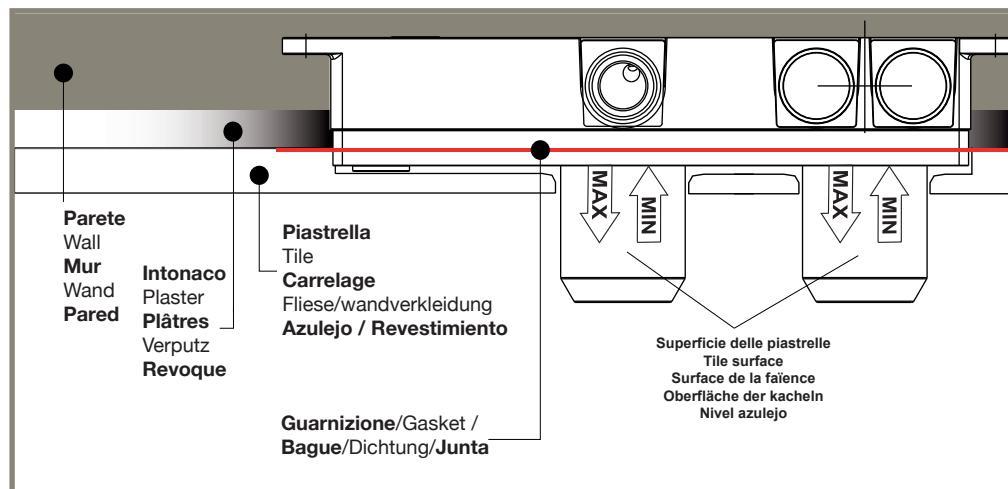
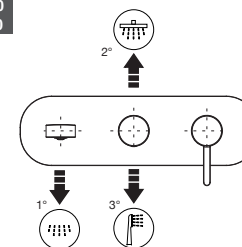
UC108-UC110  
UX108-UX110



UC108  
UX108



UC110  
UX110



Parete  
Wall  
Mur  
Wand  
Pared

Intonaco  
Plaster  
Plâtres  
Verputz  
Revoque

Piastrella  
Tile  
Carrelage  
Fliese/wandverkleidung  
Azulejo / Revestimiento

Guarnizione/Gasket /  
Bague/Dichtung/Junta

Superficie delle piastrelle  
Tile surface  
Surface de la faïence  
Oberfläche der kacheln  
Nivel azulejo